

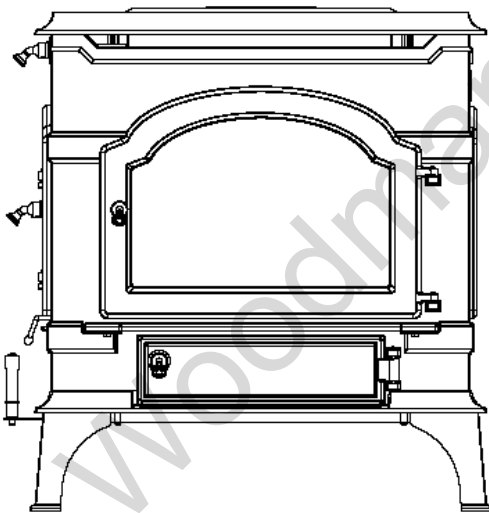


SERVICE MANUAL

For the

***DUTCHWEST CAST
NON- CATALYTIC WOODSTOVES***

MODELS 2477, 2478 & 2479



SERVICE PROCEDURES

2477, 2478 & 2479 Dutchwest Cast Non-Catalytic Woodstoves

****Wear gloves, a dust mask and protective eyewear when servicing a stove. ****

Disassembling the Interior Components

1. Remove the two Phillips bolts holding the rear shroud to the rear of the stove. Remove the shroud.



FIG. 1 Remove Rear Shroud

2. Lift the left and right andirons out of the inner bottom.



FIG. 2 Remove Andirons

3. Lift up the bottom grate and remove. Notice the retainer on the rear top of the grate which holds the shoe in place. This will be tight against the shoe and will offer resistance to the removal of the grate.

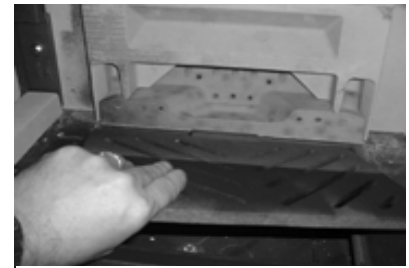


FIG. 3 Remove Bottom Grate

4. Grip the front of the shoe and carefully pull it forward out of the opening in the lower fireback refractory.



FIG. 4 Remove Shoe

5. With a Phillips screwdriver, remove the right brick support and the right end refractory and insulation panel.

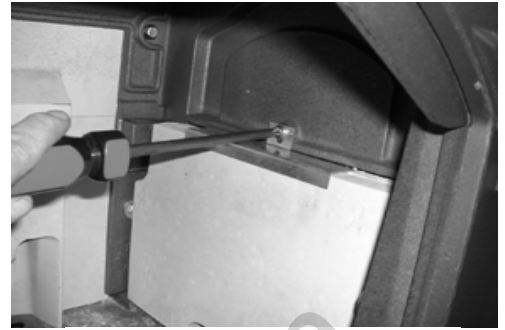


FIG. 5 Remove Side Refractory

6. If the Medium or Large Model, lift out the lower load door refractory which sites on the inner bottom against the left side below the load door.



FIG. 6 Remove Lower Load Door Refractory

7. Remove the rear sheet metal shroud held on with two Phillips head bolts just below the flue collar. With a 7/16" Socket wrench, remove the two interior bolts on the fireback retainer while gripping the nuts on the back of the stove. Lift out the fireback retainer.



FIG. 7 Fireback Retainer

8. With a 7/16" socket wrench, remove the interior bolts on the left and right lower fireback retainers while gripping the nuts on the back of the stove. Lift out the retainers making sure the refractories do not fall forward.



FIG. 8 Remove Lower Retainers

9. Lift up and out to remove the upper fireback refractory. Do not let the lower refractory panel fall forward.



FIG. 9 Upper & Lower Fireback Refractories

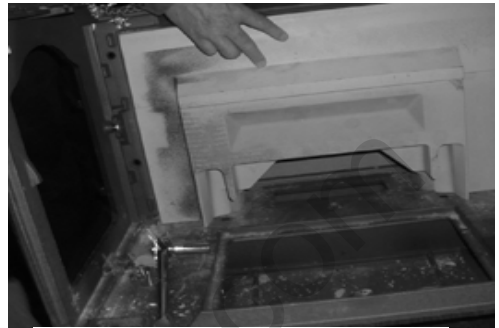


FIG. 10 Remove Upper Refractory

10. Pull forward on the lower fireback refractory to remove it.

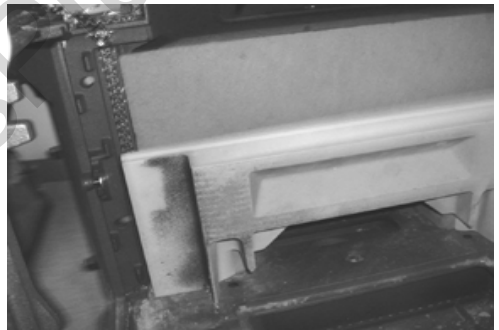


FIG. 11 Remove Lower Refractory

11. Reach to the back of the fountain assembly and gently pull it forward and out of the box. The fountain is fragile so handle with care.



FIG. 12 Remove Fountain Assembly

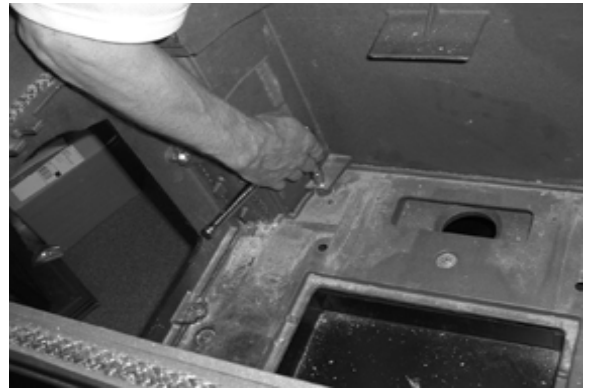


FIG. 13 Inside View With All Removed

Disassembling the Exterior Components

(after removing the interior components)

1. Take off the flue collar by removing the two nuts and bolts.



FIG. 14 Remove Flue Collar

2. Remove the front and side load doors.

3. Remove the outer top. Locate the two nuts with washers attached to two threaded rods in the underside of the inner top holding the top on. Remove the bolts and threaded rods and lift off the outer top.



FIG. 15 Remove Outer Top Bolts

4. Remove the spring clip from the damper handle damper handle.



FIG. 16 Remove the Damper Spring Clip

5. Remove the damper handle with an allen key. Remove the damper assembly by unbolting the two damper tabs and lifting the assembly out of the inner top.



FIG. 17 Remove Damper Assembly

6. Locate the two bolts and washers holding the inner top to the sides and remove them. Lift out the inner top.



FIG. 18 Remove Inner Top

7. Locate the two side bolts and one in the center/bottom of the front. Remove all three and lift the front off.



FIG. 19 Remove the Front

8. Locate the two bolts that hold the sides on. One holds it to the inner bottom and one holds it to the back. Remove both bolts and lift out the sides.



FIG. 20 Remove Both Sides

9. Remove the two bolts holding the back to the inner bottom. The back is now free remove.



FIG. 21 Remove Back

10. Locate the three bolts holding the inner bottom to the bottom and remove. Lift off the inner bottom.



FIG. 22 Remove Inner Bottom

11. Unbolt and remove the four legs



FIG. 23 Outer Bottom With Legs

12. For complete assembly, reverse the order of disassembly.

Gaskets

Small 2477 Gasket List

30002286*	Shoe Gasket	1	Bottom of Shoe
120-3589	Gasket, Fiberglass 3/8" Low D 6ND	2.90' 4.60' 3.23' 3.83' 2.66' 2.83' 2.83' 5.25' 1.83' 5.75' 5.83' 4.66' 5.30'	Ashdoor Front Door Side Door Inner Bot, Underside to Bottom Inner Bot, Upper Surface to Back Right End Left End Top Fireback Retainer Back, Left & Right sides, Front Together, Seals to Inner Top Front Bottom Inner Top
120-3560	Gasket, Fiberglass 1/4" 3ND Black	6' 1' 3.6'	Air Manifold to Front Air Passage to Inner Bottom Glass on Front Door
120-3591	Gasket, 5/16" Adhesive Backed	3' 2.42'	Flue Collar Back
* 000-3444	Moustache & Shoe Gasket Kit		Bottom and Rear of Shoe

Medium 2478 Gasket List

30002286	Shoe Gasket	1	Bottom of Shoe
120-3589	Gasket, Fiberglass 3/8" Low D 6ND	4.60'	Front Door
		2.90'	Ashdoor
		3.23'	Side Door
		3.83'	Inner Bot, Underside to Bottom
			Inner Bot, Upper Surface to
		2.42'	Back
		2.83'	Right End
		2.83'	Left End
		5.25'	Top
			Back, Left & Right sides, Front Together, Seals to Inner Top
		4.66'	Bottom
		5.83'	Front
		5.30'	Inner Top
120-3560	Gasket, Fiberglass 1/4" 3ND Black	6'	Air Manifold to Front
		1'	Air Passage to Inner Bottom
		4.1'	Glass on Front Door
120-3591	Gasket, 5/16" Adhesive Backed	3'	Flue Collar
000-3444	Moustache & Shoe Gasket Kit		Bottom and Rear of Shoe

Large 2479 Gasket List

30002296*	Shoe Gasket	1	Bottom of Shoe
120-3589	Gasket, Fiberglass 3/8" Low D 6ND	5.00'	Front Door
		2.90'	Ashdoor
		3.63'	Side Door
		5.68'	Bottom
		5.75'	Inner Bot, Underside to Bottom
		2.83'	Inner Bot, Upper Surface to Back
		3.08'	Right End
		3.08'	Left End
		5.33'	Top
		3.17'	Back
		2.4'	Fireback Retainer
		6.60'	Back, Left & Right sides, Front, Seals to Inner Top
		5.86'	Inner Top
		6.83'	Front
120-3560	Gasket, Fiberglass 1/4" 3ND Black	6.50'	Air Manifold to Front
		1'	Air Passage to Inner Bottom
		4.6'	Glass on Front Door
120-3591	Gasket, 5/16" Adhesive Backed	3'	Flue Collar
*000-3446	Moustache & Shoe Gasket Kit		Bottom and Rear of Shoe



FIG. 30 Front Gasket:

Small & Medium

6' x 1/4" Fiberglass 1203560 - Air Manifold to Front

6' x 3/8" Fiberglass 1203589 - Outer perimeter

Large

6 1/2' x 1/4" Fiberglass 1203560 - Air Manifold to Front

7' x 3/8" Fiberglass 1203589 - Outer perimeter



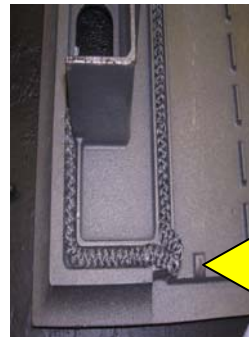
FIG. 31 Bottom:

Small & Medium

5' x 3/8" Fiberglass 1203589

Large

6.5' x 3/8" Fiberglass 1203589



bunch gasket in corner

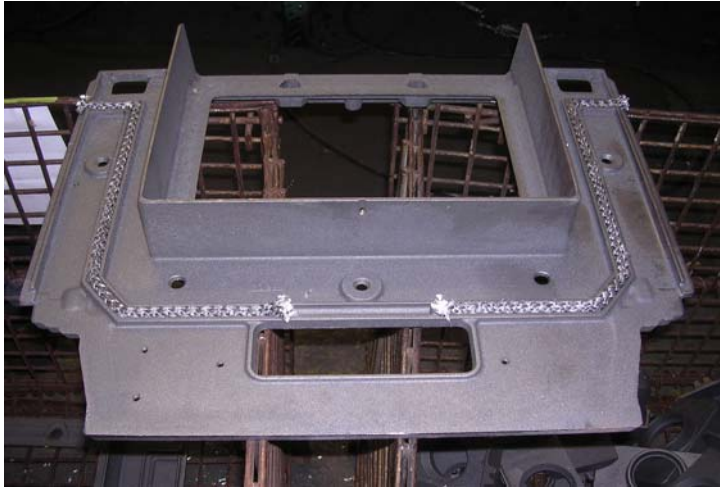


FIG. 32 Underside of Inner Bottom (seal to bottom):

Small & Medium

4' x $\frac{3}{8}$ " Fiberglass 1203589

Large

6' x $\frac{3}{8}$ " Fiberglass 1203589

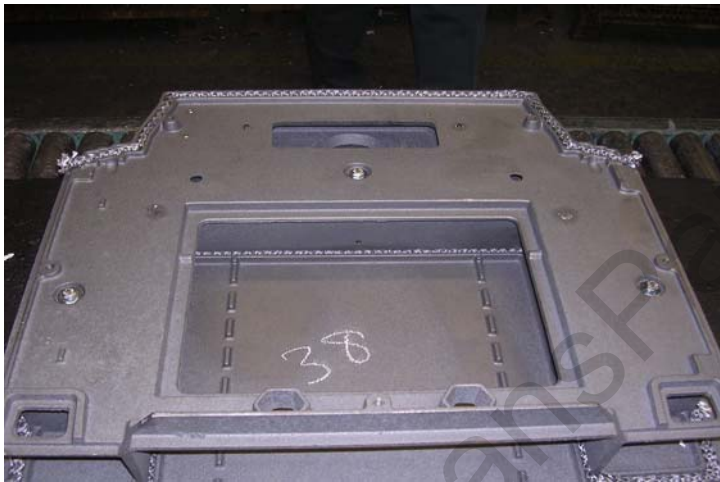


FIG. 33 Top of Inner Bottom (seal to back):

Small & Medium

3' x $\frac{3}{8}$ " Fiberglass 1203589

Large

3' x $\frac{3}{8}$ " Fiberglass 1203589



FIG. 34 Right End:

Small & Medium

3' x $\frac{3}{8}$ " Fiberglass 1203589

Large

3½' x $\frac{3}{8}$ " Fiberglass 1203589



FIG. 35 Back:

Small

2.5' x 5/16" Fiberglass 1203591

Medium

3' x 3/8" Fiberglass 1203589

Large

3' x 3/8" Fiberglass 1203589



FIG. 36 Shoe Showing Spray Adhesive:

Small & Medium

Fiber Form # 30002286

Large

Fiber Form # 30002296



FIG. 37 A & B Damper Gasket & Lower Seal on Inner Top:

Small & Medium

5 1/2' x 3/8" Fiberglass 1203589

Large

6' x 3/8" Fiberglass 1203589





FIG. 38 Inner Top Seal Wrapped
Around Sides, Back & Front:
Small & Medium
6' x $\frac{3}{8}$ " Fiberglass 1203589

Large
6 $\frac{3}{4}$ ' x $\frac{3}{8}$ " Fiberglass 1203589

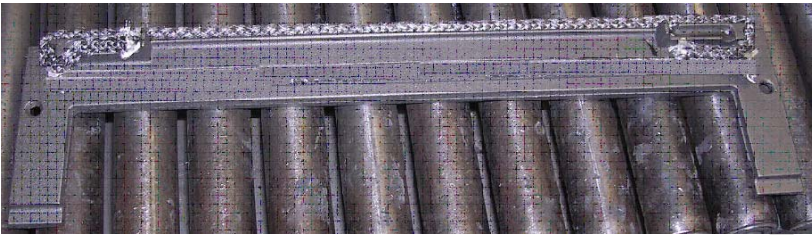
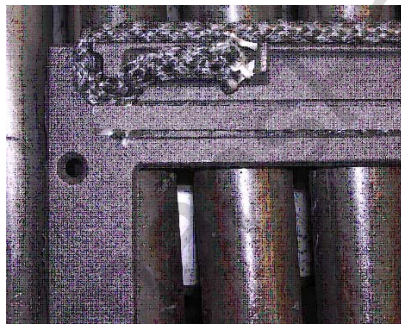


FIG. 39 A & B Fireback Retainer:
Small & Medium
None Needed



Large
2.5' x $\frac{3}{8}$ " Fiberglass 1203589



FIG. 40 Air Passage to Bottom:
Small & Medium & Large
1' x $\frac{1}{4}$ " Fiberglass 1203560

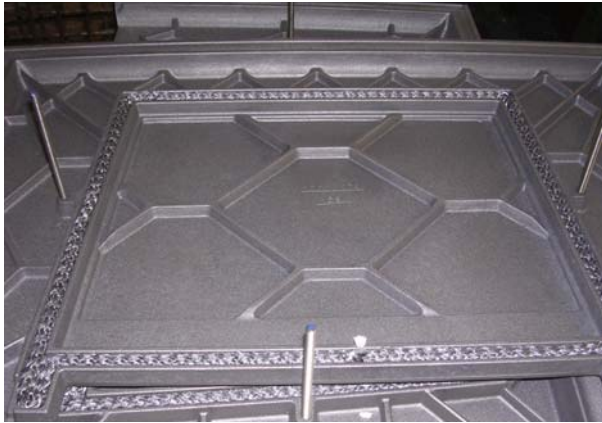


FIG. 41 Top:
Small & Medium
 5½' x ¾" Fiberglass 1203589

Large
 5½' x ¾" Fiberglass 1203589



FIG. 42 Front Door:
Small
 4' x ¼" Fiberglass for Glass 1203560
 4¾' x ¾" Fiberglass for Door 1203589

Medium
 4¾' x ¼" Fiberglass for Glass 1203560
 4¾' x ¾" Fiberglass for Door 1203589

Large
 5' x ¼" Fiberglass for Glass 1203560
 5' x ¾" Fiberglass for Door 1203589



FIG. 43 Side Door:
Small
 3¼' x ¾" Fiberglass for Door 1203589

Medium
 3¼' x ¾" Fiberglass for Door 1203589

Large
 3¼' x ¾" Fiberglass for Door 1203589

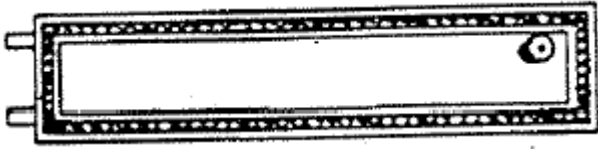


FIG. 44 Ash Door:
Small, Medium & Large
3' x $\frac{3}{8}$ " Fiberglass for Door 1203589

WoodmansPartsPlus.com