

Instructions For Converting Pilot Assembly 7211-332 From NG to LP

To Switch Pilot to LP Operation:

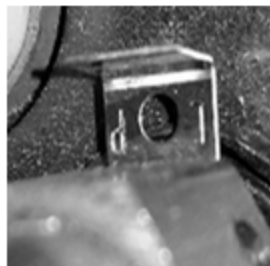
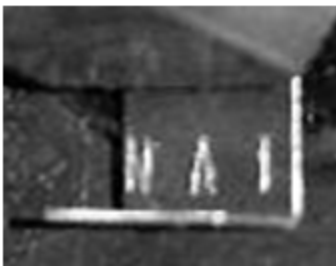
The pilot assembly in the Bristol 8763 is a slide convertible unit, requiring only a 7/16" open-end wrench for conversion. To convert pilot from NG to LP:

1. Open firebox and remove logs, burner, and pilot shield. Refer to Bristol 8763 main product manual for guidance.
2. Using the 7/16" wrench, grasp the pilot tower and turn counter-clockwise about 1/4 turn.



Figure 8 – Loosening Pilot Tower

3. Look at the front edge of the base of the pilot tower. You will see the NG/LP Pilot Orifice Gate protruding toward the front of the pilot tower and the letters "NAT" should be visible on the upper horizontal surface. Slide the gate backward in the Pilot Tower by pushing on the upturned edge by the "NAT" lettering until the upturned edge is flush with the Pilot Tower surface. You will see the NG/LP Pilot Gate protruding from the back edge of the Pilot Tower and the letters "LP" will be visible, separated by a punched hole.



4. While holding the NG/LP Pilot Gate in the LP visible position, grasp the Pilot Tower with the 7/16" wrench and turn clockwise until the tower is snug. The Pilot Hood should be oriented such that one pilot flame is directed at the thermocouple and the other is facing the main burner (see Figure 10).

