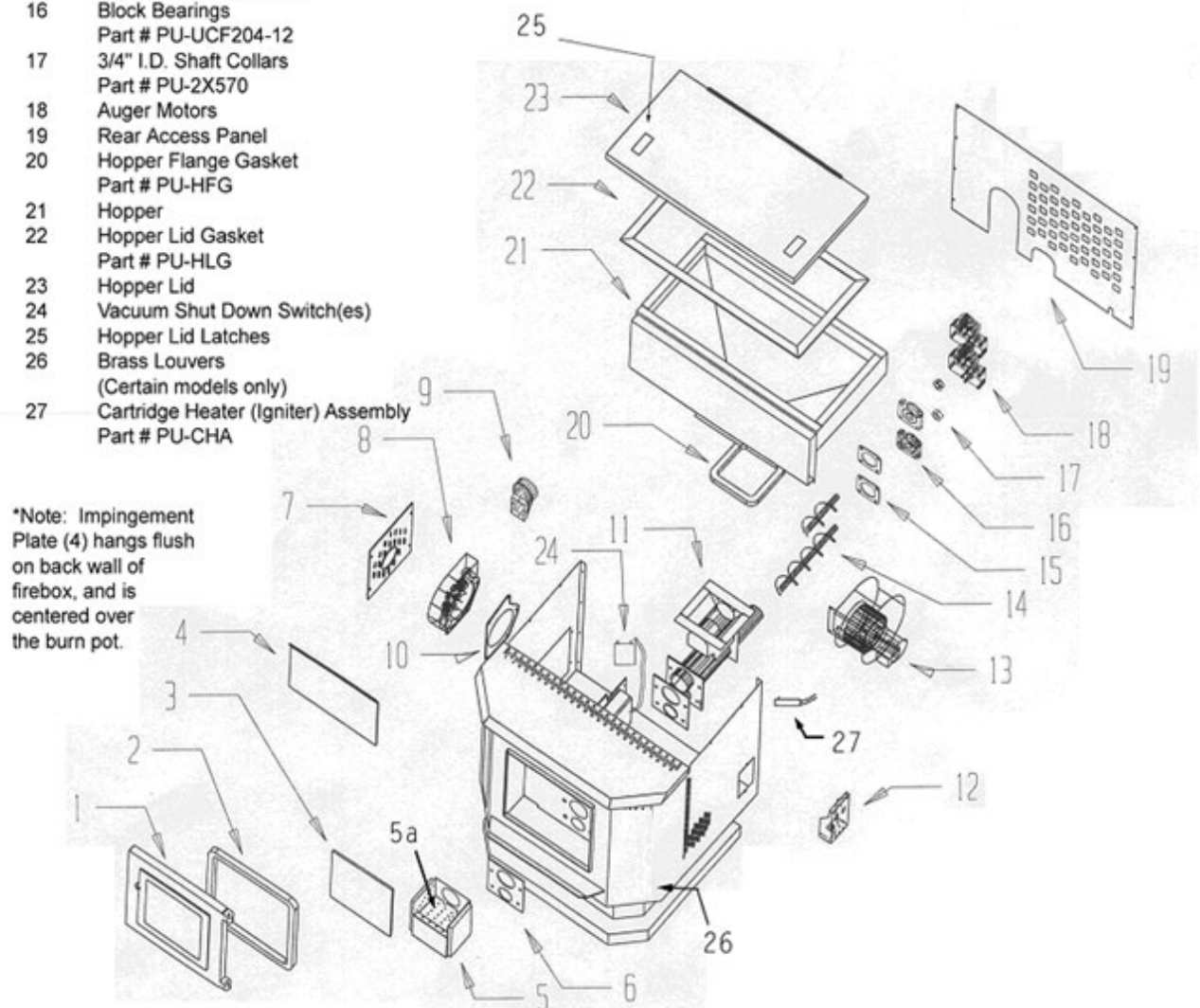


Pellet Stove – Exploded View Diagram

NUMBER	PART DESCRIPTION
1	Door (Part # CA-19A)
2	Door Gasket (Part # AC-DGKC)
3	Glass with Gasket (Part # AC-G9)
4	Impingement Plate*
5	Burn Pot
5a	Wear Plate for Burn Pot**
6	Burn Pot Gasket
7	Side Access Panel
8	Combustion Blower
9	3" Blower Adapter
10	Gasket for Combustion Blower Part # PU-CBG
11	Pellet Feeder Pot
12	Digital Control Board
13	Convection Blower
14	Augers: (Top Auger and Bottom Auger)
15	Block Bearing Gaskets
16	Block Bearings Part # PU-UCF204-12
17	3/4" I.D. Shaft Collars Part # PU-2X570
18	Auger Motors
19	Rear Access Panel
20	Hopper Flange Gasket Part # PU-HFG
21	Hopper
22	Hopper Lid Gasket Part # PU-HLG
23	Hopper Lid
24	Vacuum Shut Down Switch(es)
25	Hopper Lid Latches
26	Brass Louvers (Certain models only)
27	Cartridge Heater (Igniter) Assembly Part # PU-CHA

NOTE ON PART NUMBERS:

This diagram is a basic England's Stove Works pellet unit diagram. Your model may vary somewhat. See our online store at www.englishstoves.com or the parts list in your manual for specific part numbers for your model stove. If a part is not listed in the manual or on the website, or if you have questions, call (800) 245-6489.



REPLACEMENT PARTS LIST

Part No	Description
AC-GGK	Glass Gasket Kit (gasket only, no glass)
AC-DGKC	Door Gasket Kit
AC-G9	9"x9" Glass with Gasket
AC-SHN	Nickel Door Spring Handle
AC-MBSP	Hi-Temperature Black Spray Paint
PU-047040	1 RPM Auger Motor Assembly
PU-BP18	Burn Pot Assembly
PU-BP18WP	Wear Plate (fits inside burn pot)
PU-076002B	Combustion (Exhaust) Blower – includes 3" adapter
PU-4C447	Convection (Room Air) Blower
PU-AF6T	Top Auger Shaft
PU-AF11B	Bottom Auger Shaft
PU-62-40-151-3	Hopper Lid Latch
PU-UCF204-12	Auger Bearing
PU-2X570	¾" Locking Collar
CU-VS	Vacuum Shut-Down Switch
PU-VH	Vacuum Hose
PU-CBMG	Combustion Blower & Motor Gasket
PU-BPG	Burn Pot Gasket
PU-ABGN	Auger Bearing Gasket
PU-HLG	Hopper Lid Gasket
PU-CHA	Cartridge Heater (Igniter) Assembly
PU-CBF6	6 AMP Control Board Fuse
AC-HLSB	Hopper Lid Safety Switch
AC-HP	Hinge Pin – rivet for cast door
PU-SSTCW	Thermocouple Wire <i>(only included on top mounted control board)</i>
IP-25PDVC	Top Baffle (inside firebox)
PU-SSCBHS	Heat Sensor for Control Board (for Top Mount models)
PU-CB14	Top Mounted Control Board (for Top Mount models)
AC-CMB	Control Board Mounting Box (included with top mounted control board)
PU-CB19	Side Mounted Control Board (for Side Mount models)