



Technical Data Sheet

Tucson and Santa Fe Stone Installation Instructions

Date: 1/21/2005

Page: 1 of 2

MATERIALS REQUIRED:

Stone

2 Top Stones

Tucson 3 5/16" x 10 5/16"

Santa Fe 5 1/4" x 10 5/16"

1 Top Center Stone (for vent-free 8 5/8" x 3 5/8")

4 Side Stones 7 1/2" x 6 1/2"

Steel (shipped in stove accessory box)

2 Side Stone Clip/Heat Shield

PROCEDURE:

(Note: When installing the stone sets on the Tucson and Santa Fe Vent Free units, you must first remove the rear heat shield. This is done by removing the two Phillips screws under the top rear of the stove)

1. Loosen the two 1/4-20 nuts which attach the top of the stove to the sides and bottom. Hold the threaded rods with the vise-grips while loosening the nuts with a 7/16" wrench (*Figure 1*)

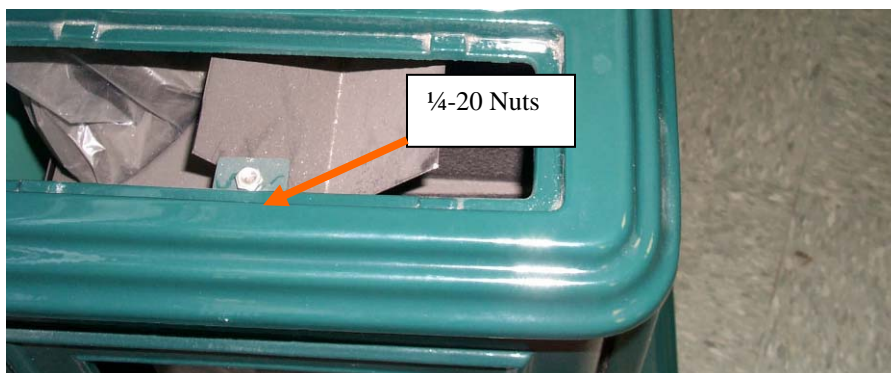


Figure 1

2. Locate the 4 side stones (7-1/2" x 6-1/2"). Slide one stone in from the rear, in between the firebox and side castings. Keep this stone up, while sliding the second side stone under it. The lower stone will fit in the groove so that it covers the cutout in the side cast. Lower the upper stone onto the lower stone.



3. Once the side stones are in place, slide the stone clip in place between the stones and the threaded rods. The stone clip should be centered on the top and bottom stone. The longer of the two tabs should be placed on top, while the shorter tab goes on the bottom. The clip is in place when the rod sets in the divot on the clip (*Figure 2*). A tap with the handle end of a hammer may be needed to set the stone clip in place.

HINT: To tighten the stones to the side castings, gently tap the stone clip further down on the rods.

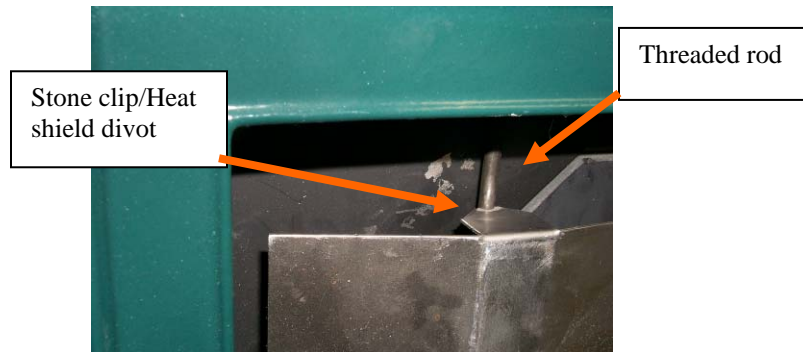


Figure 2

4. Tighten the 1/4-20 nuts on the top of tie rods to place tension on the tie rods and to secure the stones in place.

IMPORTANT: DO NOT over-tighten these nuts, as it will cause the tab on the base piece to snap off. Since lock nuts are used, just turn them until they are snug.

5. Gently set the top stones in place on the top of the stove. The top has sunken surfaces that match the dimensions of your stones.