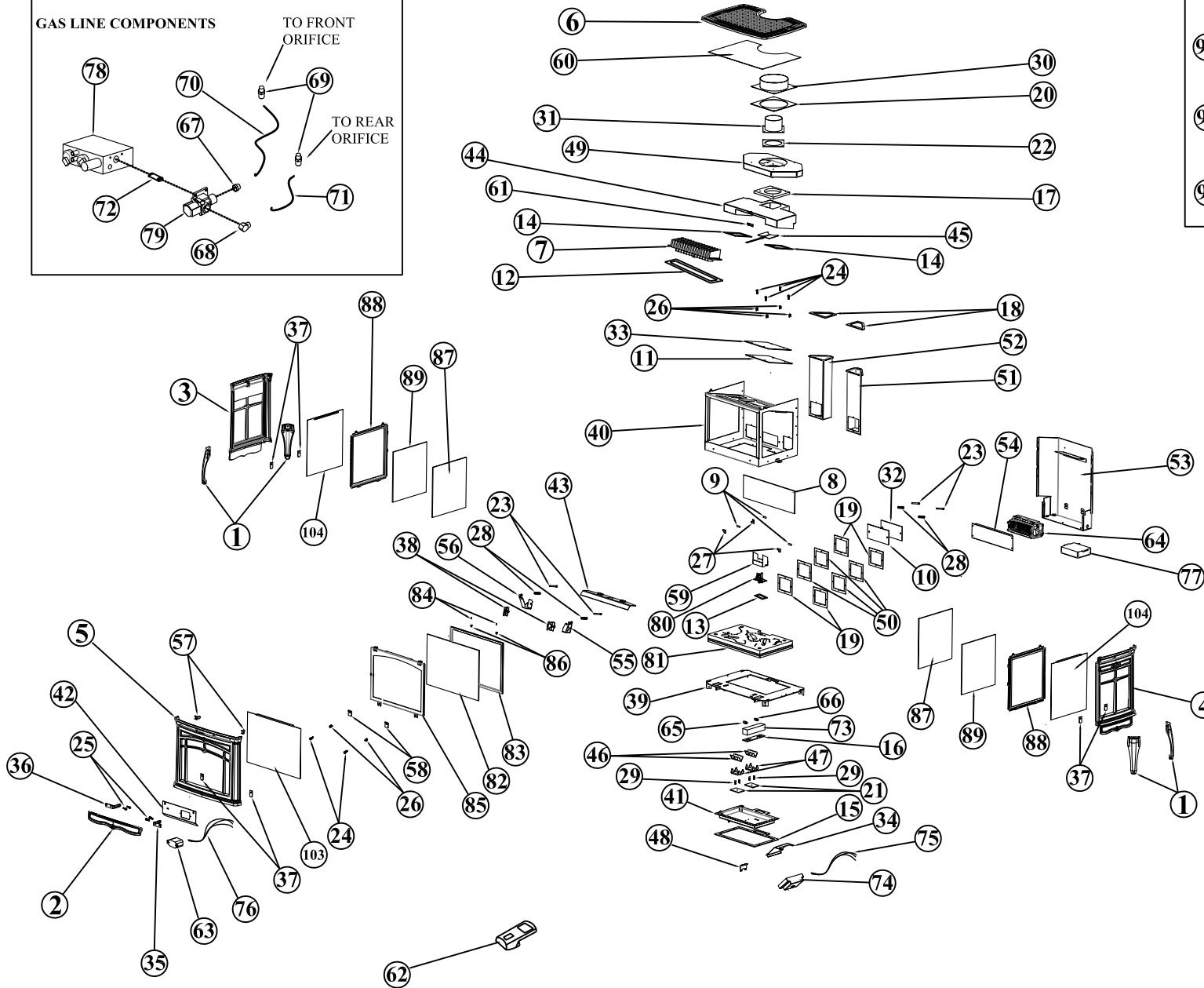
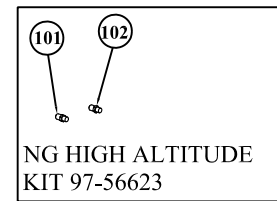
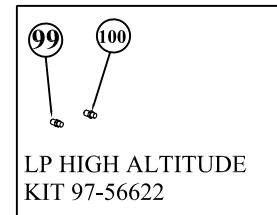
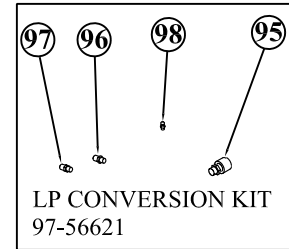
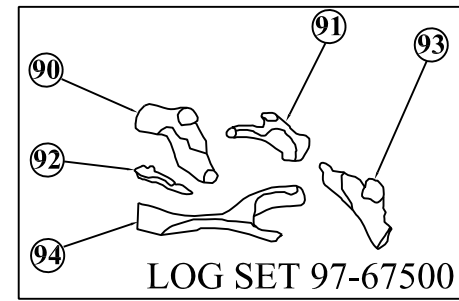
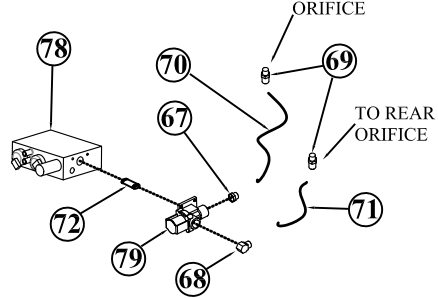


**GAS LINE COMPONENTS**





## Bristol DX 8762 Exploded View Key

Key	Component	Object Description	Qty
1	2710-700	FOOT	4
2	2710-710	CONTROL DOOR	1
3	2710-720	LEFT SIDE	1
4	2710-725	RIGHT SIDE	1
5	2710-730	FRONT	1
6	2710-740	TOP	1
7	2710-487	HEAT EXCHANGER	1
8	3030-066	REAR MIRRORED GLASS	1
9	3120-021	GLASS CLIP GASKET	3
10	3160-105	DELAYED IGNITION RELIEF GASKET, REAR	1
11	3160-108	DELAYED IGNITION RELIEF GASKET, TOP	1
12	3160-150	HEAT EXCHANGER GASKET	1
13	3160-152	PILOT GASKET	1
14	3160-200	EXHAUST MANIFOLD GASKET	2
15	3160-205	BURNER TRAY GASKET	1
16	3160-207	ORIFICE BLOCK GASKET	1
17	3160-210	EXHAUST COLLECTOR 1/2" THICK GASKET	1
18	3160-215	AIR INLET PLENUM GASKET	2
19	3160-220	INLET COLLAR PLATE GASKET	4
20	3160-225	FLUE INLET COLLAR GASKET	1
21	3160-227	AIR SHUTTER SLIDER GASKET	2
22	3160-228	FLUE EXIT COLLAR GASKET	1
23	4500-1420	CAP SCREW 1/4- 20 X 2-1/4" HEX SOCKET HEAD	4
24	4500-0285	SHOULDER SCREW 5/16" X 3/4" HEX SOCKET HEAD	6
25	4500-3085	SHOULDER SCREW 5/16" X 1/2" HEX SOCKET HEAD	4
26	5000-107	SPRING: .48" OD. .5"	6
27	5021-060	GLASS CLIP	3
28	5240-136	SPRING: DELAYED IGNITION RELIEF	4
29	5240-139	SPRING: AIR SHUTTER	4
30	5701-926	INLET STARTER COLLAR	1
31	5701-927	EXHAUST STARTER COLLAR	1
32	5710-100	DELAYED IGNITION PLATE, REAR	1
33	5710-105	DELAYED IGNITION PLATE, TOP	1
34	5710-211	DFC BOARD SUPPORT	1
35	5710-222	HINGE: RIGHT CONTROL DOOR	1
36	5710-224	HINGE: LEFT CONTROL DOOR	1
37	5710-250	LOWER MOUNTING BRACKET	6
38	5710-279	SPRING MOUNTING HOOK	2
39	5710-303	BASE PLATE	1

40	5710-304	FIREBOX	1
41	5710-305	FIREBOX BOTTOM PAN	1
42	5710-308	MODESTY PANEL	1
43	5710-309	BAFFLE	1
44	5710-310	EXHAUST COLLECTOR	1
45	5710-311	RESTRICTOR PLATE	1
46	5710-313	AIR SHUTTER	2
47	5710-314	AIR SHUTTER SLIDER	2
48	5710-318	VALVE MOUNTING BRACKET	1
49	5710-320	INLET COLLECTOR	1
50	5710-325	INLET COLLAR PLATE	4
51	5710-330	PRIMARY AIR INLET CHANNEL, RIGHT	1
52	5710-335	PRIMARY AIR INLET CHANNEL, LEFT	1
53	5710-340	CONVECTIVE AIR DEFLECTOR	1
54	5710-347	BLOWER SCREEN	1
55	5710-370	SIDE MOUNTING BRACKET, UPPER RIGHT	1
56	5710-372	SIDE MOUNTING BRACKET, UPPER LEFT	1
57	5710-375	FRONT MOUNTING BRACKET, UPPER	2
58	5710-390	FRONT GLASS FRAME LOWER MOUNTS	2
59	5710-307	PILOT SHIELD	1
60	5710-383	TOP SCREEN	1
61	5710-395	RESTRICTOR PACKING CLIP	1
62	7000-395	REMOTE CONTROL TRANSMITTER - PROFLAME II	1
63	7000-397	REMOTE CONTROL RECEIVER (BATTERY HOLDER) - PF II	1
64	7211-944	BLOWER MOTOR	1
65	7200-466	NG ORIFICE HOOD, #43 (FRONT)	1
66	7200-467	NG ORIFICE HOOD, #46 (REAR)	1
67	7210-007	FITTING: STRAIGHT 3/8" NPT X 3/8" COMPRESSION	1
68	7210-008	90 DEG. ELBOW 3/8" NPT X 3/8" COMPRESSION	1
69	7211-003	FITTING: STRAIGHT 1/4" NPT X 3/8" COMPRESSION	2
70	7211-018	FLEX TUBE: 12"	1
71	7211-027	FLEX TUBE: 6"	1
72	7211-036	BLACK PIPE NIPPLE, 3/8" X 1-1/2"	1
73	7211-056	GAS MANIFOLD	1
74	7211-101	DFC BOARD	1
75	7211-102	WIRE HARNESS: DFC BOARD	1
76	7211-103	WIRE HARNESS: REMOTE CONTROL GTMS	1
77	7211-105	FAN CONTROL MODULE	1
78	7211-110	GAS CONTROL VALVE	1
79	7211-355	SPLIT FLOW SOLENOID VALVE	1
80	7211-395	NG PILOT ASSEMBLY	1
81	7211-610	EMBER BED ASSEMBLY	1
	<b>97-58620</b>	<b>FRONT GLASS KIT</b>	
82	3030-062	FRONT GLASS	1
83	3160-060	FRONT GLASS GASKET TADPOLE TAPE	4FT
84	4400-0200	RIVIT:1/8" X 1/8"	2

85	5710-360	FRONT GLASS FRAME	1
86	5710-365	FRONT GLASS CLIP	2
	<b>97-58621</b>	<b>SIDE GLASS KIT</b>	<b>2</b>
87	3030-064	SIDE GLASS	1
88	5710-350	SIDE GLASS FRAME	1
89	3160-081	SIDE GLASS GASKET	4FT
	<b>97-67500</b>	<b>LOG SET</b>	
90	7211-611	LOG: REAR LEFT	1
91	7211-612	LOG: REAR RIGHT	1
92	7211-613	LOG: LEFT TWIG	1
93	7211-614	LOG: FRONT RIGHT	1
94	7211-615	LOG: FRONT LEFT	1
		<b>SOLD SEPERATELY</b>	
	<b>97-56621</b>	<b>LP CONVERSION KIT</b>	
95	7211-344	LP STEPPER MOTOR	1
96	7200-469	#57 ORIFICE MAIN BURNER HOOD MALE	1
97	7200-468	#54 ORIFICE MAIN BURNER HOOD MALE	1
98	7211-136	.35mm PILOT ORIFICE	1
	<b>97-56622</b>	<b>HIGH ALTITUDE LP KIT</b>	
99	7200-455	#55 ORIFICE MAIN BURNER HOOD MALE	1
100	7200-459	#59 ORIFICE MAIN BURNER HOOD MALE	1
	<b>97-56623</b>	<b>HIGH ALTITUDE NG KIT</b>	
101	7200-466	#43 ORIFICE MAIN BURNER HOOD MALE	1
102	7200-447	#47 ORIFICE MAIN BURNER HOOD MALE	1
	<b>97-59100</b>	<b>SCREEN KIT (ACCESSORY KIT)</b>	
103	5710-381	FRONT SCREEN	1
104	5710-382	SIDE SCREEN	2