



TRAVIS INDUSTRIES
HOUSE OF FIRE

PB 36 CF, 564 25K & 35K Deluxe Log Set

See Part Numbers / Compatibility Below

Part Numbers / Compatibility

Name	SKU	ProBuilder 36 CF	564 25K & 35K (CF or Std)
Classic Oak	94500626	Yes	Yes
Birch	94500624	Yes	Yes
Classic Oak*	94500625	Yes	No

* The first version of the classic oak log set (94500625) is not compatible with the 564 25K. The log set was updated with additional locating pins and holes to aid in alignment. It was given a new part number (94500626) and is now compatible with the 564 25K. Both classic oak log sets, when installed, look the same (94500625 and 94500626). If replacement parts are needed for the old set (94500625) use the part numbers for the new set shown below – you may need to remove a pin if using a new log.

Installation Warnings

NOTE: Consult the installation manual for order of installation. If using propane (LP), convert the appliance before installing the log set. If using firebacks, install them prior to installing the log set.

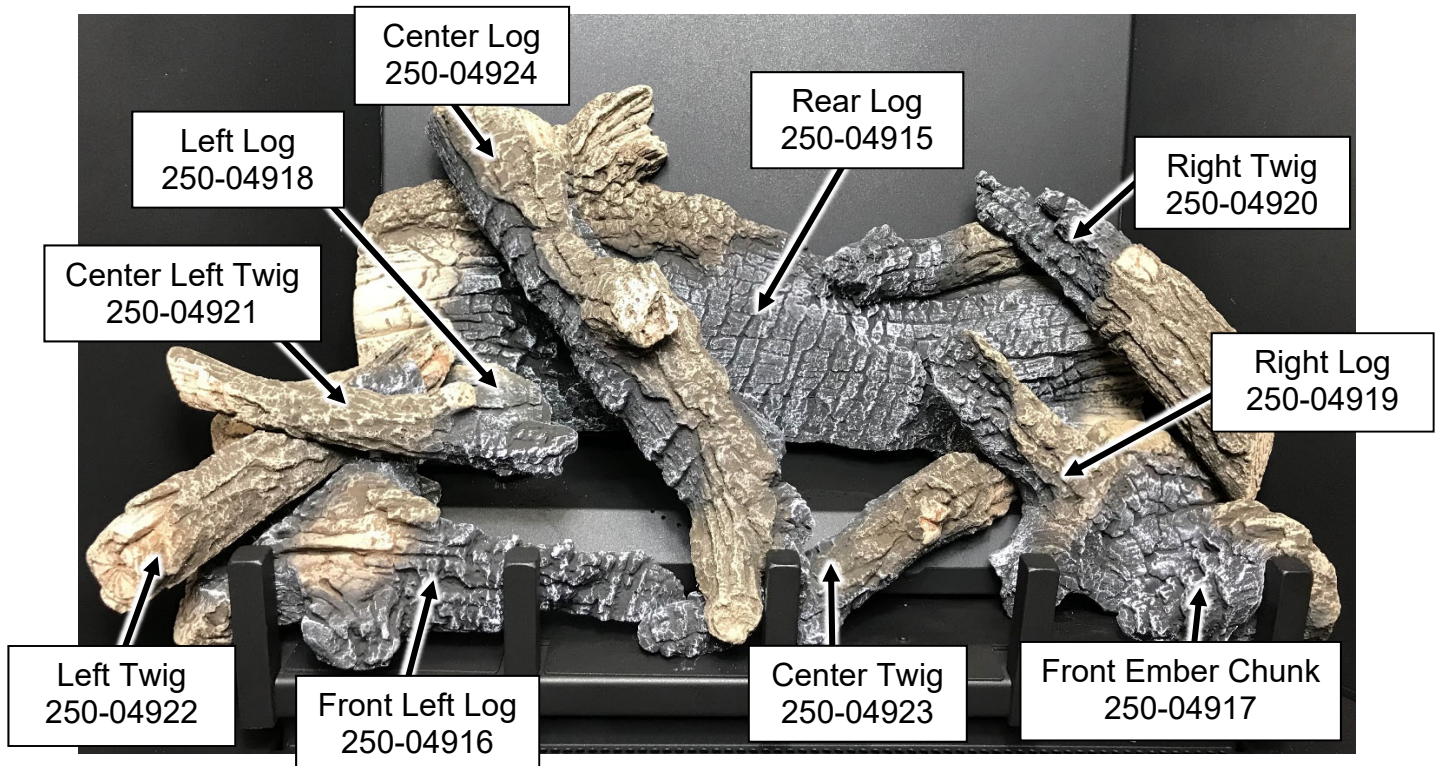
- **The logs are fragile, especially after being exposed to heat.**
- Make sure the gas control valve is OFF and the heater is cool prior to conducting service.
- Failure to position the parts in accordance with these diagrams or failure to use only parts specifically approved with this appliance may result in property damage or personal injury.
- The burner must be correctly positioned before installing the log set. Make sure the burner is fully seated and the pilot is properly aligned. See owner's manual for details on burner removal.

Installation – Oak vs. Birch

Both log sets are nearly identical in shape. The only difference is the paint scheme and some textural details. Page 2 contains a picture of the birch log set installed. The installation pictures show the classic oak log set.

Log Set Overview – Classic Oak 94500625 & 94500626

When installed, the ten (10) logs should appear as shown below.





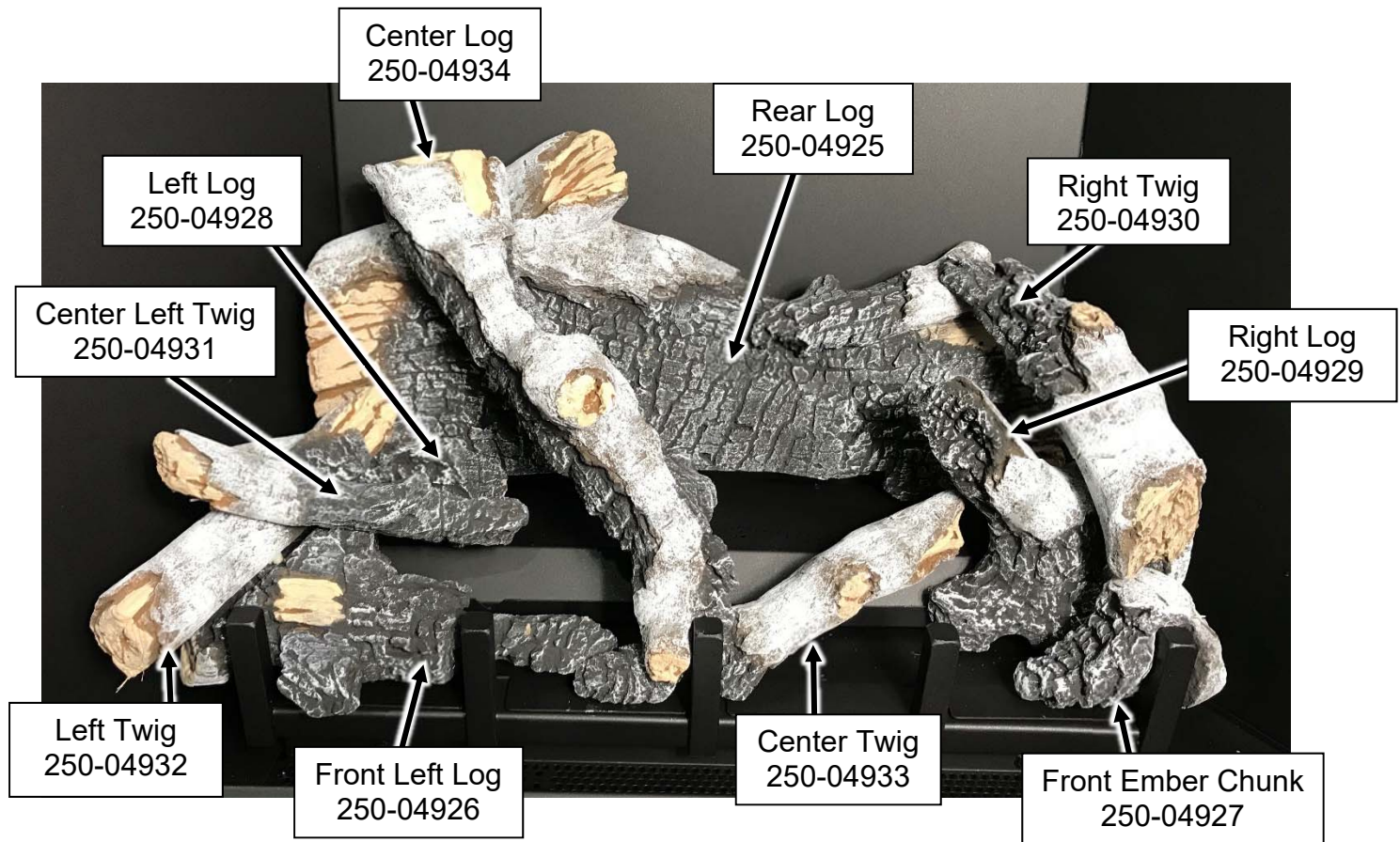
TRAVIS INDUSTRIES
HOUSE OF FIRE

PB 36 CF, 564 25K Deluxe Log Set

See Part Numbers / Compatibility Below

Log Set Overview – Birch 94500624 (36 CF or 564 25K)

When installed, the ten (10) logs should appear as shown below.





TRAVIS INDUSTRIES
HOUSE OF FIRE

PB 36 CF, 564 25K Deluxe Log Set

See Part Numbers / Compatibility Below

Installation

Rear Log

The rear log has two pockets that insert over two tabs on the back burner (see photos below). Place the log in place and push it back. The log straddles the burner and does not cover any burner holes.





TRAVIS INDUSTRIES
HOUSE OF FIRE

PB 36 CF, 564 25K Deluxe Log Set

See Part Numbers / Compatibility Below

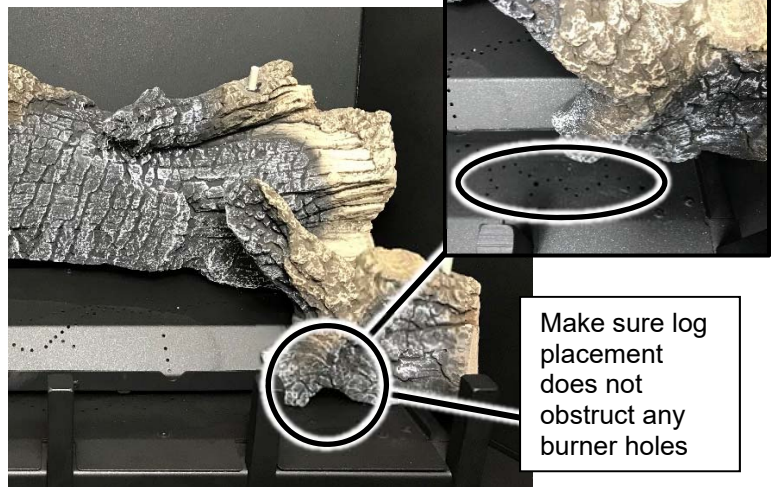
Left Log

The left log has two flat surfaces on the bottom. Place the log so the flat surfaces rest against the burner as shown below. Make sure the log does not block any burner holes.



Right Log

The right log has a channel on the bottom that fits over the ridge on the burner. Place the log in place and slide it to the rear.



Make sure log placement does not obstruct any burner holes



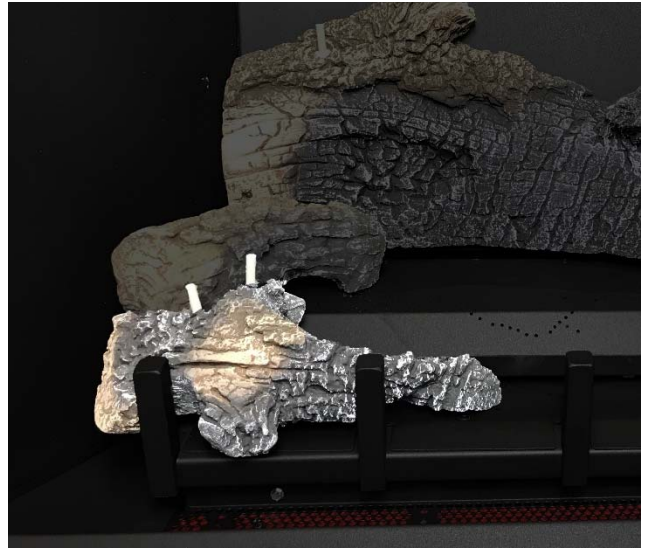
TRAVIS INDUSTRIES
HOUSE OF FIRE

PB 36 CF, 564 25K Deluxe Log Set

See Part Numbers / Compatibility Below

Front Left Log

The front left log has a channel that fits over the grate. When in place, the knob on the front of the log fits over the grate as well.



Front Ember Chunk

The front ember chunk has a groove on the bottom that fits over the grate. Place it as shown below.





TRAVIS INDUSTRIES
HOUSE OF FIRE

PB 36 CF, 564 25K Deluxe Log Set

See Part Numbers / Compatibility Below

Center Twig

The center twig is shown below. It has a pin on the bottom side. When in place, the fork on the front straddles the grate and the pin rests on the rear burner (make sure it is not over any burner holes).



Center Log

The center log has a hole on the back and a fork on the front. Position the log so this fits over the locating pin on the rear log. Make sure the fork on the front of the log fits over the grate as shown below.





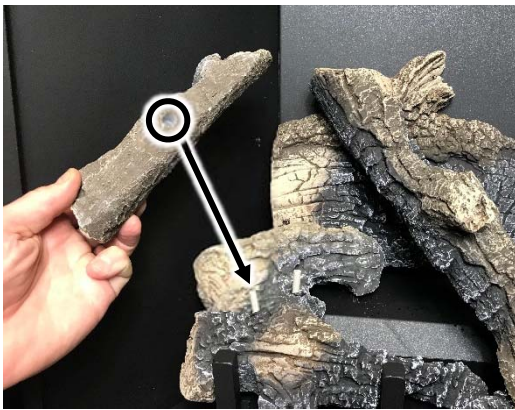
TRAVIS INDUSTRIES
HOUSE OF FIRE

PB 36 CF, 564 25K Deluxe Log Set

See Part Numbers / Compatibility Below

Left Twig

The left twig has a hole on the bottom that fits over the locating pin on the front left log. Place the twig as shown below. The front left log has a groove that will point the twig upwards and to the right.



Center Left Twig

The center left twig is flat on the bottom with one hole. Place the twig on the locating pin as shown below. Make sure the twig is positioned so it does not cover any burner holes.





TRAVIS INDUSTRIES
HOUSE OF FIRE

PB 36 CF, 564 25K Deluxe Log Set

See Part Numbers / Compatibility Below

Right Twig

The right twig has a hole and a slot on the bottom that fit over the pins on the right log. When properly positioned, the log will be placed as shown below and to the right.



Ember Installation

NOTE: The embers are included with the fireplace. Consult the installation manual for details on installing the embers. If using the Ember-Glo light, the embers are installed with the Ember-Glo light glass.

Embers are provided to further enhance the firebox. Place the embers on the firebox floor and on the burner. Do not place embers over any of the burner holes or air channels.





TRAVIS INDUSTRIES
HOUSE OF FIRE

PB 36 CF, 564 25K Deluxe Log Set

See Part Numbers / Compatibility Below

Rock Wool Placement

NOTE: The rock wool is included with the fireplace. Consult the installation manual for details on installing the rock wool.

The included rock wool is placed on top of the burner to enhance the glow from the burner. **The rock wool works best when it is applied in a very thin layer.** The best method for applying the rock wool is to brush it on to the burner. Compress a clump of rock wool between your thumb and forefinger. Use a stiff brush to apply a thin layer of rock wool fibers onto the burner. Do not use the entire bag of rock wool. Use only a small amount and save the remainder. Over-use of rock wool will diminish the glow and may cause sooting or other adverse conditions.

