

864 Deluxe Birch/Oak Log Set

(Birch - sku# 94500720) (Oak – sku#94500721)

Compatibility

- 864TRV (31K) – Standard or CleanFace
- 864TV (40K) – Standard or CleanFace
- 864TRV Fireplace (replacement set)

Packing List

- 10 Piece Log Set

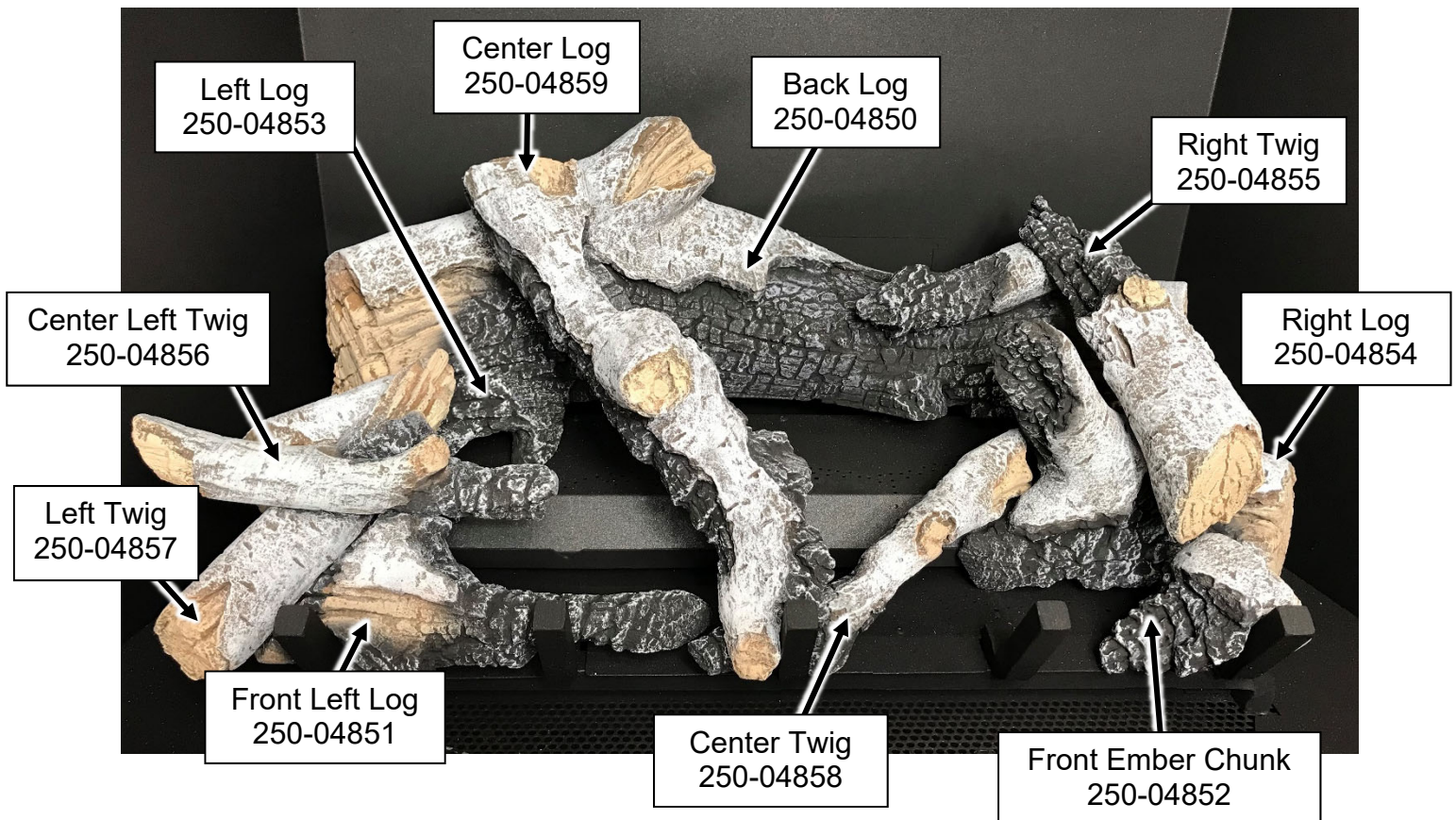
Installation Warnings

NOTE: Consult the installation manual for order of installation. If using propane (LP), convert the appliance before installing the log set. If using firebacks, install them prior to installing the log set.

- **The logs are fragile, especially after being exposed to heat.**
- Make sure the gas control valve is OFF and the heater is cool prior to conducting service.
- Failure to position the parts in accordance with these diagrams or failure to use only parts specifically approved with this appliance may result in property damage or personal injury.
- The burner must be correctly positioned before installing the log set. Make sure the burner is fully seated and the pilot is properly aligned. See owner's manual for details on burner removal.

Log Set Overview – Birch

When installed, the ten (10) logs should appear as shown below.

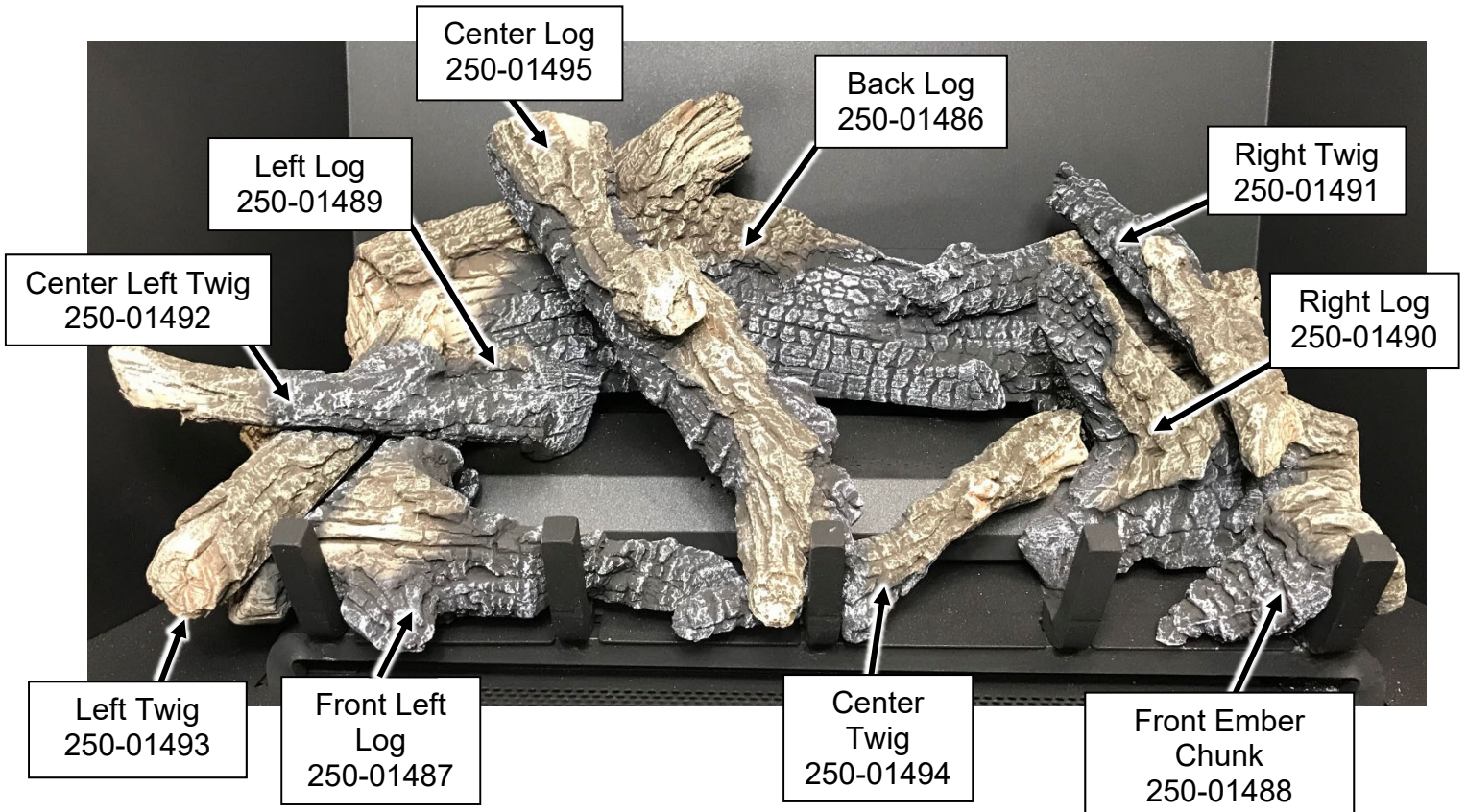


864 Deluxe Birch/Oak Log Set

(Birch - sku# 94500720) (Oak – sku#94500721)

Log Set Overview – Classic Oak

When installed, the ten (10) logs should appear as shown below.



864 Deluxe Birch/Oak Log Set

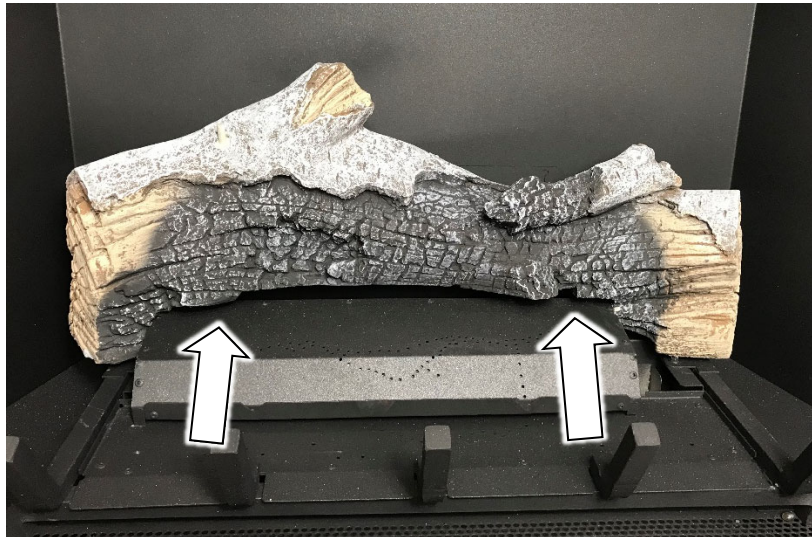
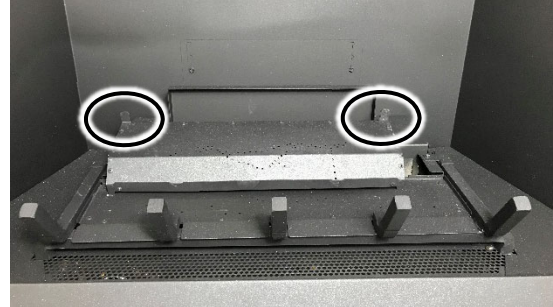
(Birch - sku# 94500720) (Oak – sku#94500721)

Installation

Both log sets are nearly identical in shape. The only difference is the paint scheme and some textural details. The installation pictures show the Birch log set

Back Log

The back log has two pockets that insert over two tabs on the back burner (see photos below). Place the log in place and push it back. The log straddles the burner and does not cover any burner holes.



Right Log

The right log has a channel on the bottom that fits over the grate. Place the log in place and slide it to the rear.



864 Deluxe Birch/Oak Log Set

(Birch - sku# 94500720) (Oak – sku#94500721)

Front Left Log

The front left log has a channel that fits over the grate. When in place the knob on the front of the log fits over the grate as well.



Left Log

The left log has a channel on the bottom. Place this channel over the grate. When in place, make sure the log is positioned so it does not block any burner holes.



864 Deluxe Birch/Oak Log Set

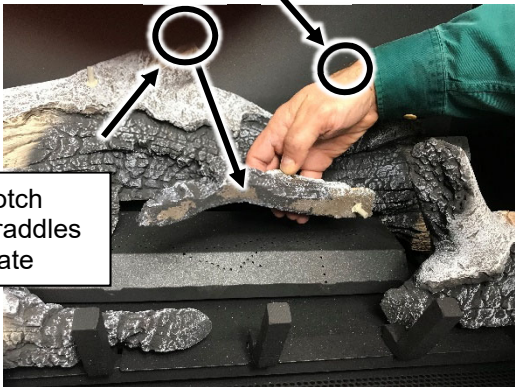
(Birch - sku# 94500720) (Oak – sku#94500721)

Center Twig

The center twig is shown below. It has a pin on the bottom side. When in place, the fork on the front straddles the grate and the pin rests on the rear burner (make sure it is not over any burner holes).



Pin rests on burner



Notch straddles grate

Front Ember Chunk

The front ember chunk has a groove on the bottom that fits over the grate. Place it as shown below.

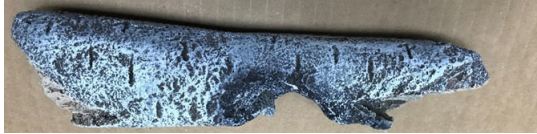


864 Deluxe Birch/Oak Log Set

(Birch - sku# 94500720) (Oak – sku#94500721)

Left Twig

The left twig has a hole on the bottom that fits over the pin on the front left log. Place the twig as shown below. The front left log has a groove that will point the twig upwards and to the right.



Center Left Twig

The left center twig is flat on the bottom and has a fork at one end. Place the twig as shown below. Note how the twig rests in the groove in the front left log and the right end hangs over the burner but does not rest on it.

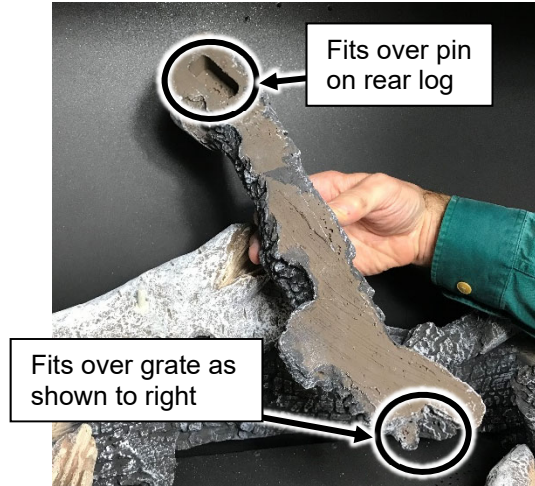


864 Deluxe Birch/Oak Log Set

(Birch - sku# 94500720) (Oak – sku#94500721)

Center Log

The center log has a hole on the back and a fork on the front. Position the log so this fits over the pin on the back log. Make sure the fork on the front of the log fits over the grate as shown below.



Right Twig

The right twig has a hole on the bottom that fits over the pin on the right log. Position the twig so it rests on the back log as shown below.



864 Deluxe Birch/Oak Log Set

(Birch - sku# 94500720) (Oak – sku#94500721)

Ember Installation

NOTE: The embers are included with the fireplace. Consult the installation manual for details on installing the embers. If using the ember bed light, the embers are installed with the ember bed light glass.

Embers are provided to further enhance the firebox. Place the embers on the firebox floor and on the burner. Do not place embers over any of the burner holes or air channels.



Rock Wool Placement

NOTE: The rock wool is included with the fireplace. Consult the installation manual for details on installing the rock wool.

The included rock wool is placed on top of the burner to enhance the glow from the burner. **The rock wool works best when it is applied in a very thin, porous layer.** The best method for applying the rock wool is to brush it on to the burner. Compress a clump of rock wool between your thumb and forefinger. Use a stiff brush to apply a thin layer of rock wool fibers onto the burner. Do not use the entire bag of rock wool. Use only a small amount and save the remainder. Over-use of rock wool will diminish the glow and may cause sooting or other adverse conditions.

