

# 4237 Bon-Fyre Birch Log Set Installation Instructions (SKU 94500981)

## Packing List

- Log 1  
250-04999



- Log 2  
250-04943



- Log 3  
250-04944



- Log 4  
250-05005



- Log 5  
250-04592



- Log 6  
250-04892



- Log 7  
250-05006



- Log 8  
250-04939



- Log 9  
250-05007



## Included With Fireplace (not packed in with this log set)

- Stainless Steel Wool
- Bag of Ember Chunks
- Bag of Rock Wool

# 4237 Bon-Fyre Birch Log Set Installation Instructions (SKU 94500981)

---

## Log Set Installation

1. Stretch the stainless steel wool to a thin gauze-like layer.



2. Place the steel wool over the center air channel, between the burners. It should be tucked under the burners.



3. Place 1 bag of ember chunks over the stainless steel. The chunks should not cover the burner or any of its ports.



## 4237 Bon-Fyre Birch Log Set Installation Instructions (SKU 94500981)

- Place the remaining ember chunks over the floor of the firebox as shown below. The chunks should not cover the burner or any of its ports.

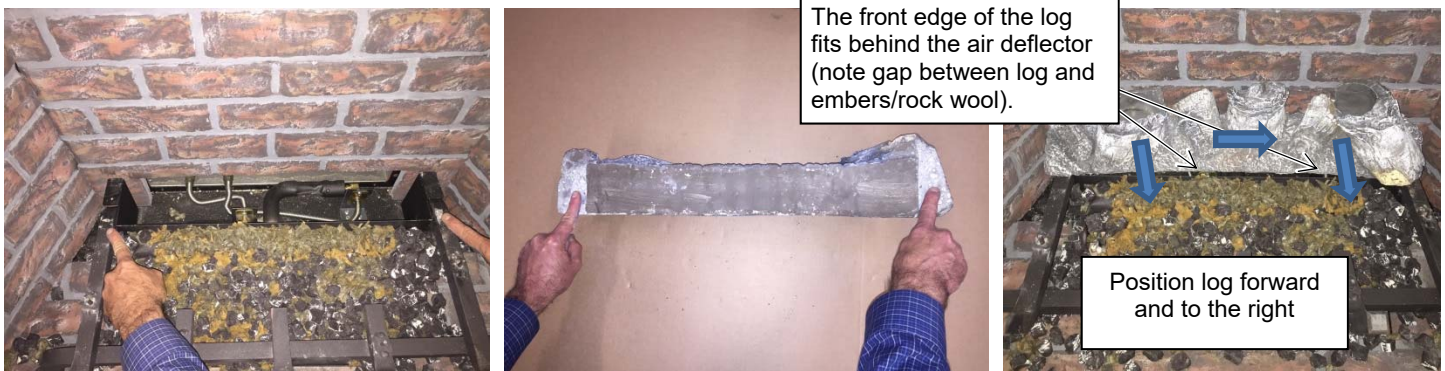


- Tear small chunks of rock wool and place them over the burner as shown below. They should form a loose layer over the burner that allows for air to pass through. **USE THE ENTIRE BAG OF EMBERS.**



# 4237 Bon-Fyre Birch Log Set Installation Instructions (SKU 94500981)

6. Install log 1 as shown below. Make sure the front edge of the log fits behind the center air deflector. The log should be pulled all the way forward and to the right.

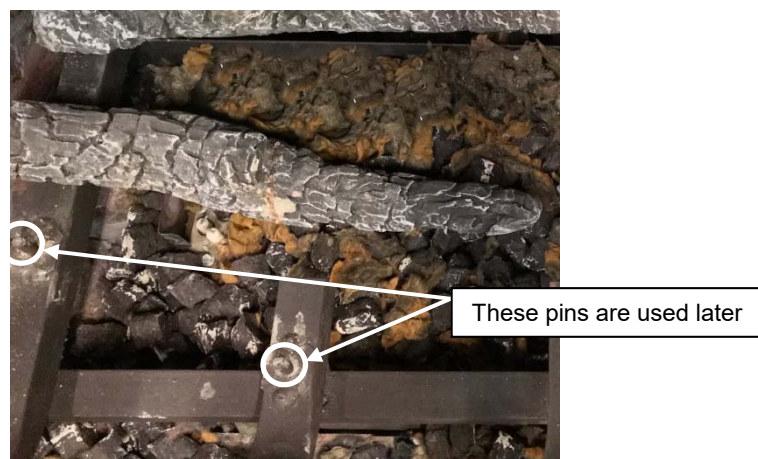


7. Install the number 2 log by sliding the bottom of the logs into the sockets on log 1. When installed, the top of the number 2 log will rest on the back wall of the fireplace.

**NOTE:** The number 2 log is heavy. You may want two people to put it in place.



8. Install log 3 BEHIND the left pin on the fireplace grate as shown below. The right end of the log rests on the ember bed (not the pin). The position of this log will be fine-tuned later after other logs are in place. The two pins are used on other logs later in the installation.

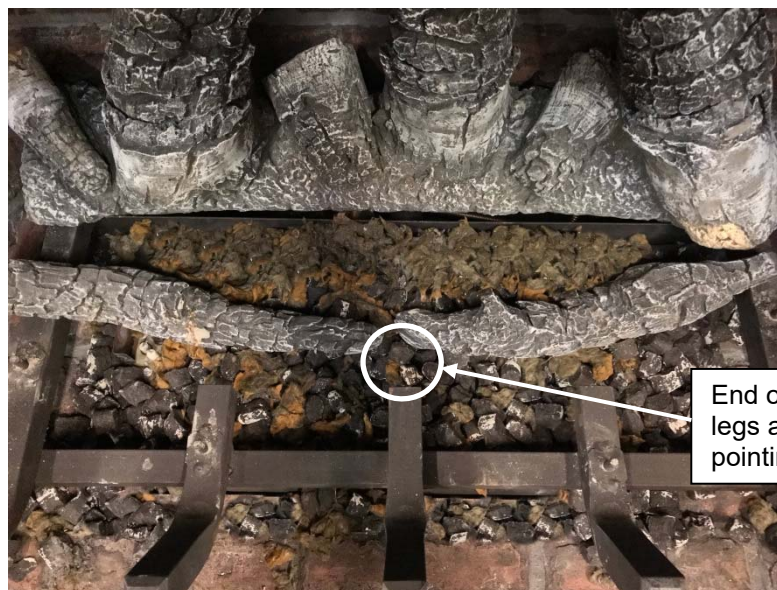


# 4237 Bon-Fyre Birch Log Set Installation Instructions (SKU 94500981)

Install log 4 as shown below. The end to the right should be slid back until it is in contact with log 1. The left end of the log sits on the ember bed, just behind the rib of the grate as shown below.

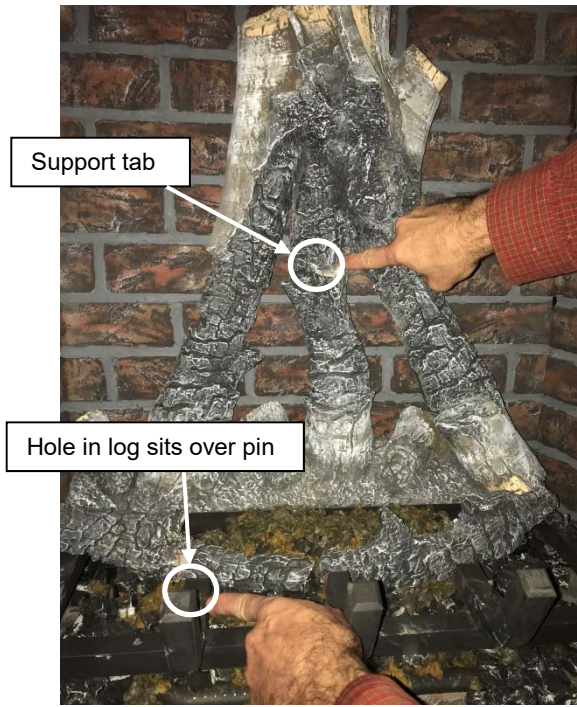


**NOTE:** Position the inside ends of logs 3 and 4 so they are pointing at each other as shown below.



## 4237 Bon-Fyre Birch Log Set Installation Instructions (SKU 94500981)

9. Install log 5 as shown below. The bottom of the log has a hole that fits over the pin shown on the picture. The top of the log rests on a support tab that sticks out of log 2 (see below).



10. Install log 6 as shown below. The bottom of the log has a hole that fits over the pin shown in the picture.

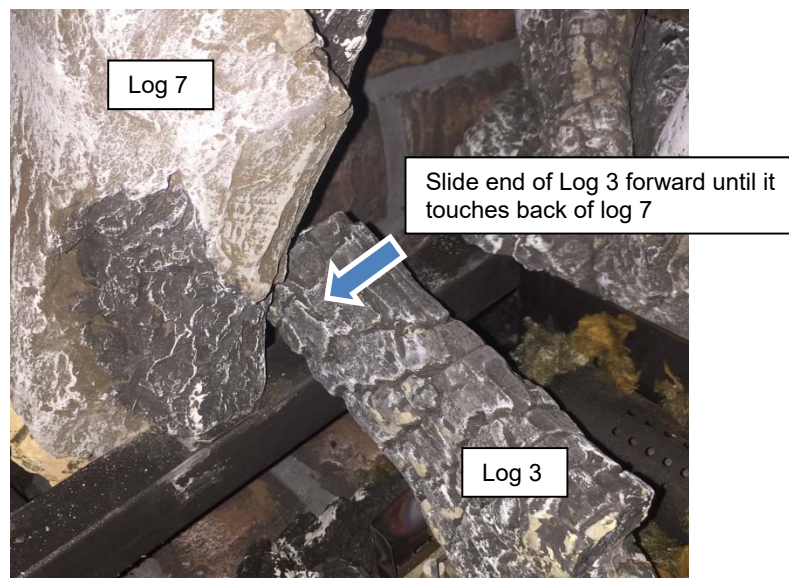


## 4237 Bon-Fyre Birch Log Set Installation Instructions (SKU 94500981)

11. Install log 7 as shown below. The flat notch on the lower portion of the log rests on the log grate and the log has a hole that fits over the pin on the grate.



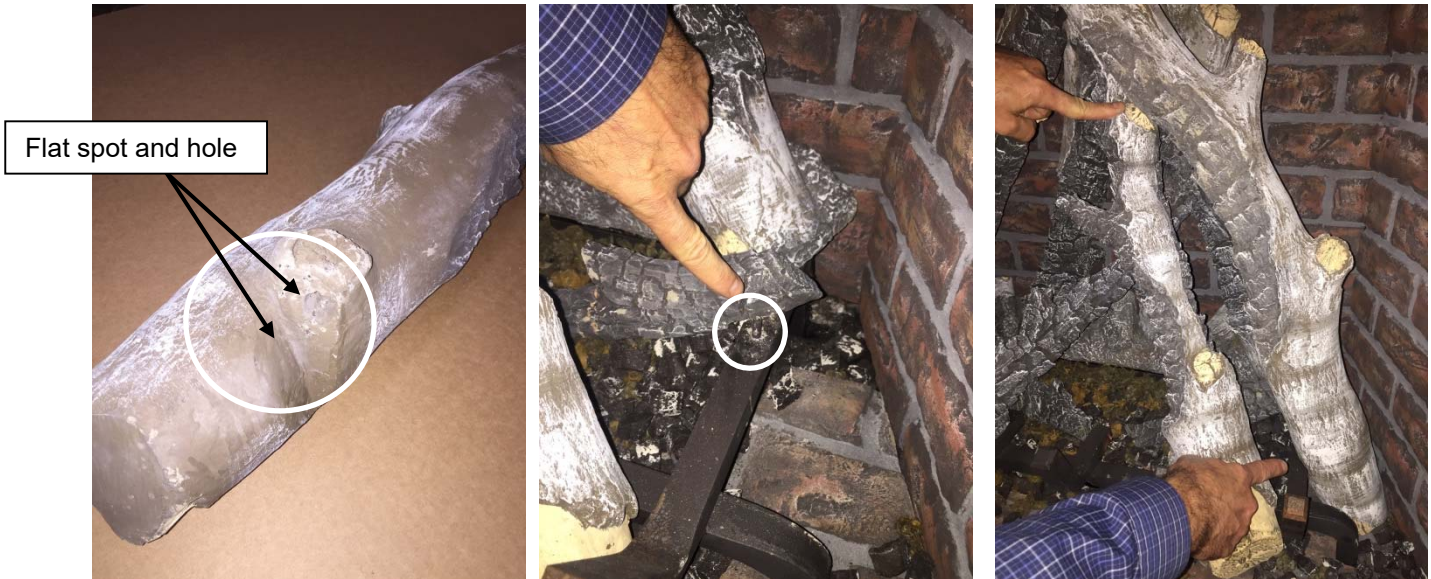
12. Once log 7 is in place, move the left end of log 3 forward until it is in contact with the back of log 7 (see below).



# 4237 Bon-Fyre Birch Log Set Installation Instructions (SKU 94500981)

13. Install log 8 as shown below.

**NOTE:** The flat indent on the back of the log fits over the outer edge of the grate and the hole in the log rests on the pin. The top of the log rests on log 6.



14. Install log 9 as shown below.

**NOTE:** The flat indentation on the bottom of the log rests on the front of the log grate where indicated below.





## 4237 Bon-Fyre Birch Log Set Installation Instructions (SKU 94500981)

---

15. The log set, when installed, should look as shown below.

