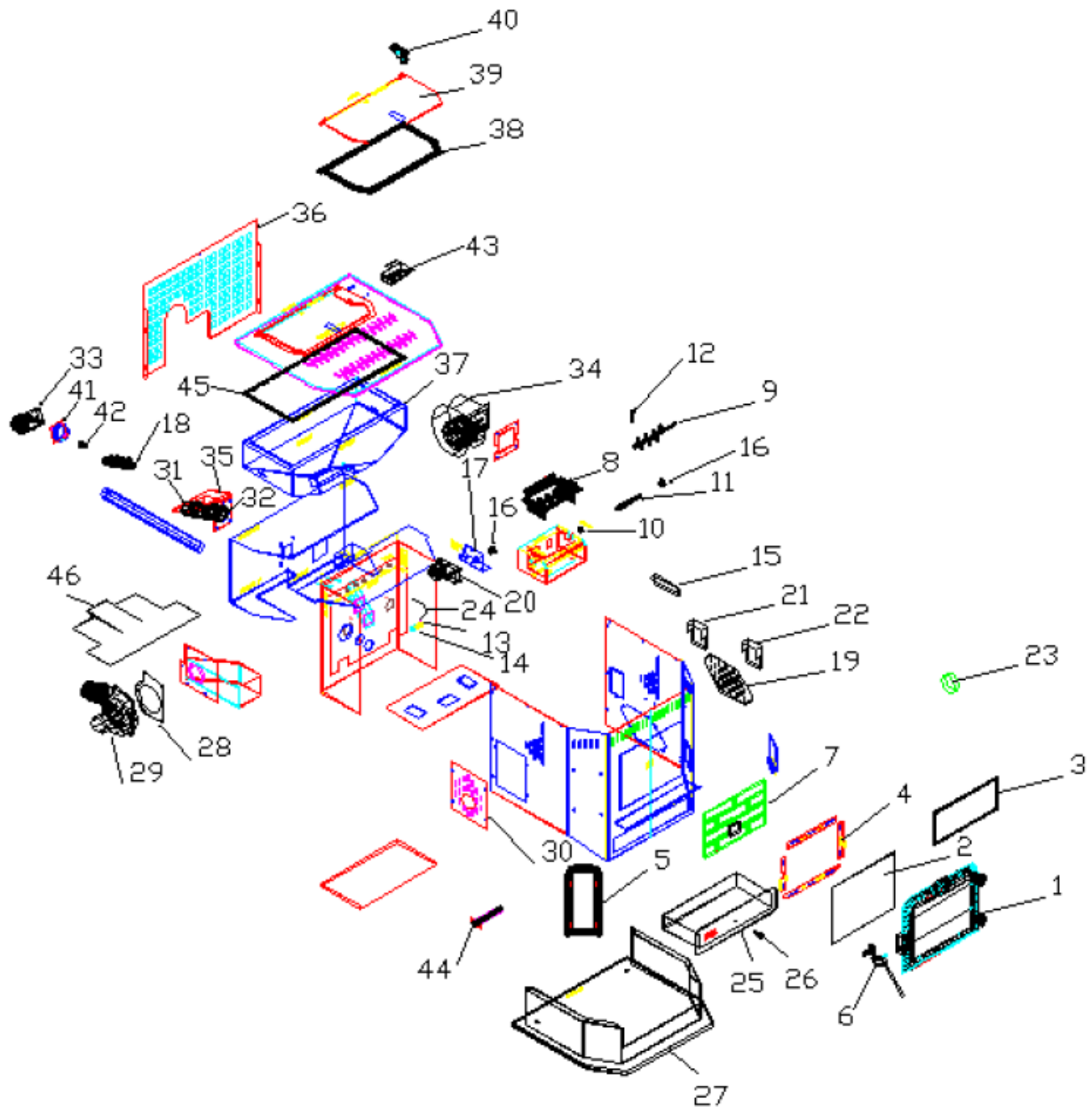


**ENGLAND STOVE WORKS
10-CPM 49-TRCPM 49-SHCPM
PARTS LIST**



PART NUMBER	PART DESCRIPTION
PU-OAK	Outside Air Kit (Now included with unit!)
AC-33000	3" Corn Vent Kit (Through-the-Wall)
AC-33100	4" Corn Vent Kit (Through-the-Wall)
PU-DTSTAT	Wall Thermostat
AC-3003	Remote Thermostat
AC-109	Brass Lip Trim
AC-109BN	Brushed Nickel Lip Trim
AC-MBSP	High Temp. Spray Paint

ENGLAND STOVE WORKS
10-CPM 49-TRCPM 49-SHCPM
PARTS LIST

<u>ITEM</u>	<u>PART NUMBER</u>	<u>PART DESCRIPTION</u>
1	CA-10	Door
2	AC-G20	Glass with Gasket H 11.5 X W 14.75
3	AC-GGK	Glass Gasket Kit
4	AC-GSCPM	Glass Supports
5	CA-11	Side Panel Castings
6	CA-DH	Cast Door Handle
7	CPM-CFB	Brick Fiber board
8	CPM-BP	Burnpot
9	CPM-FS	Fuel Stirrer
10	CPM-MC	Fuel Stirrer Collar 5/8"
11	CA-CPMDS	Fuel Stirrer Drive Shaft
12	R-FN-HP	Fuel Stirrer Hitch Pin
13	CPM-FST	Fuel Stirrer Tube 3"
14	R-FN-SF-2024-16	Fuel Stirrer Bushings - 1" (2 each)
15	CPM-26CH	Fuel Stirrer Drive Chain
16	CPM-SP	Fuel Stirrer Sprocket (2 each)
17	CPM-SMB	Stirrer Motor Bracket
18	PU-AFUF	Auger
19	CPM-RCP	Right Side Cover Plate
20	PU-047040	1 RPM Stirrer Motor
21	CPM-CB07	Control Board*
22	CPM-CB07A	Aux Corn Control Board
23	CU-VS	Vacuum Switch
24	PU-VH	Vacuum Hose
25	AC-APCPM	Ash Pan
26	AC-03	Ash Pan Knob
27	CPM-BR (L or E)	Base & Riser
28	PU-CBG	Exhaust Blower Gasket
29	PU-076002S	CPM Exhaust Blower
30	CPM-LCP	Left Side Cover plate
31	CA-ATUF	Auger Tube Assembly
32	PU-ATGUF	Auger Tube Gasket
33	CU-047042	2 RPM Auger Motor
34	PU-4C447	Convection Air Blower
35	PU-HFGUF	Hopper Flange Gasket
36	CPM-RAP	Rear Access Panel
37	CPM-HOP	Hopper
38	AC-GGK	Hopper Lid Gasket
39	CPM-HL	Hopper Lid
40	PU-62-40-151-3	Hopper Lid Latch
41	CA-AMPP	Auger Mounting Plate
42	CA-AC	Auger Coupler
43	AC-HLS	Hopper lid Switch
44	PU-CH6	Igniter
45	PU-HLG	Hopper Top Gasket
46	CPM-PGB52	Insulation Exhaust Tube Gasket
47	AC-SHN	Brushed Nickel Spring Handle (not shown)
48	AC-SH	Brass Spring Handle (not shown)
49	AC-DGKCPM	Door Gasket (not shown)
50	PU-GP	Guide Plate (not shown)
51	CU-RG	Rubber Gasket (not shown)
52	CPM-APG	Ash Pan Gasket (not shown)
53	CPM-AP	Air Pump (not shown)

*Not Shown – PU-CBHS Control Board Heat Sensor